

## PT-Node

### Network Adapter for Printing and Data Transfer

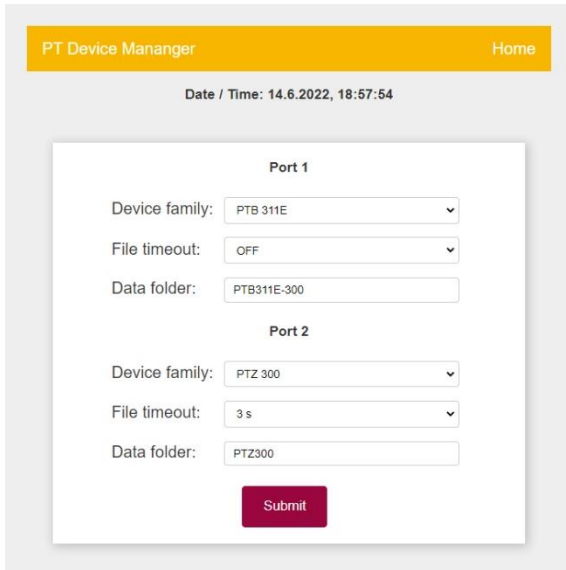
PT-Node is an adapter that connects up to two Pharma Test instruments simultaneously to a network using a wired LAN or wireless WiFi connection. This way you can print test results from the instrument via your web browser on any local or network printer. Furthermore, it is possible to transfer the test results from the instruments to external systems in the same network. PT-Node launches with support for several different Pharma Test instruments and support for more instruments is planned.



A small OLED screen shows the network connection status of the device including its IP address. For the initial setup PT-Node creates a WiFi access point to which you can connect from your computer or smartphone to configure your network setting. Both wired LAN and wireless WiFi connections are supported with either static IP addresses or DHCP.

Once this initial setup is performed the display shows which instruments are connected to both channels of the PT-Node. An icon shows that PT-Node is currently receiving data and from which channel. The current date and time are displayed as well.

## Web Interface

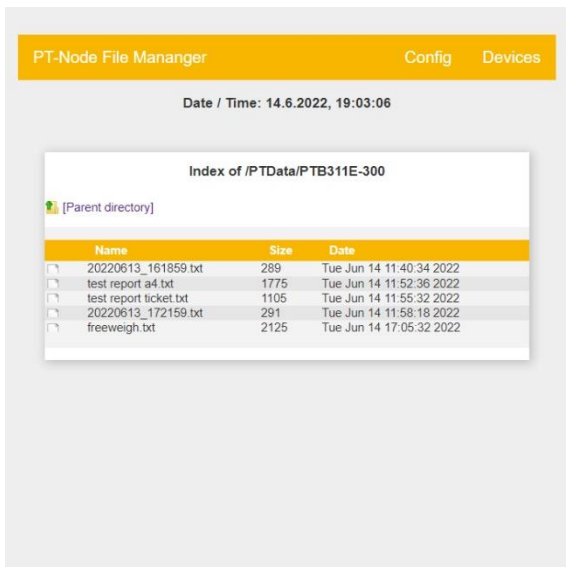
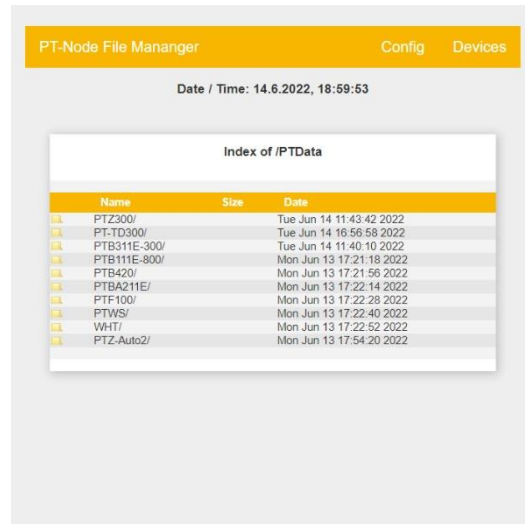


PT-Node is configured through a web interface that you can access through your desktop or mobile browser without installing any software locally. The connection setting for many Pharma Test instruments are pre-defined.

You can connect up to two instruments at the same time and they can simultaneously send data to PT-Node.

Through this device manager screen you can change what model of instrument is connected to either of the two channels of PT-Node.

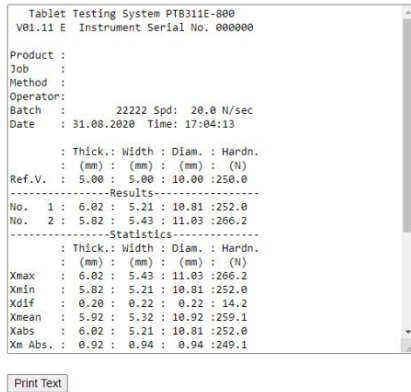
For each instrument a folder on the storage of PT-Node is created.



In the folder all reports are listed including their date of creation.

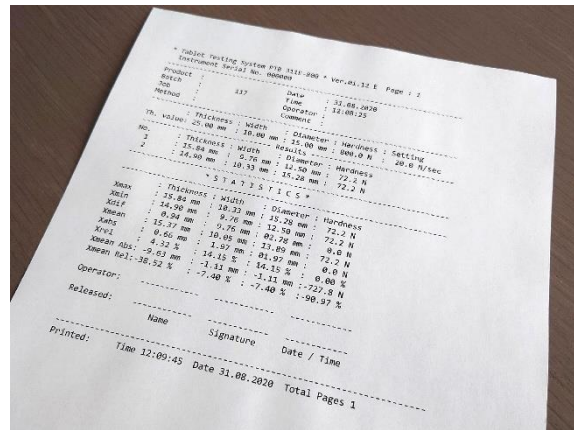
## Report Printing

/PTData/PTB311E-300/test report ticket.txt



Click on any report to view it in your web browser. The data can be displayed only. It is not editable.

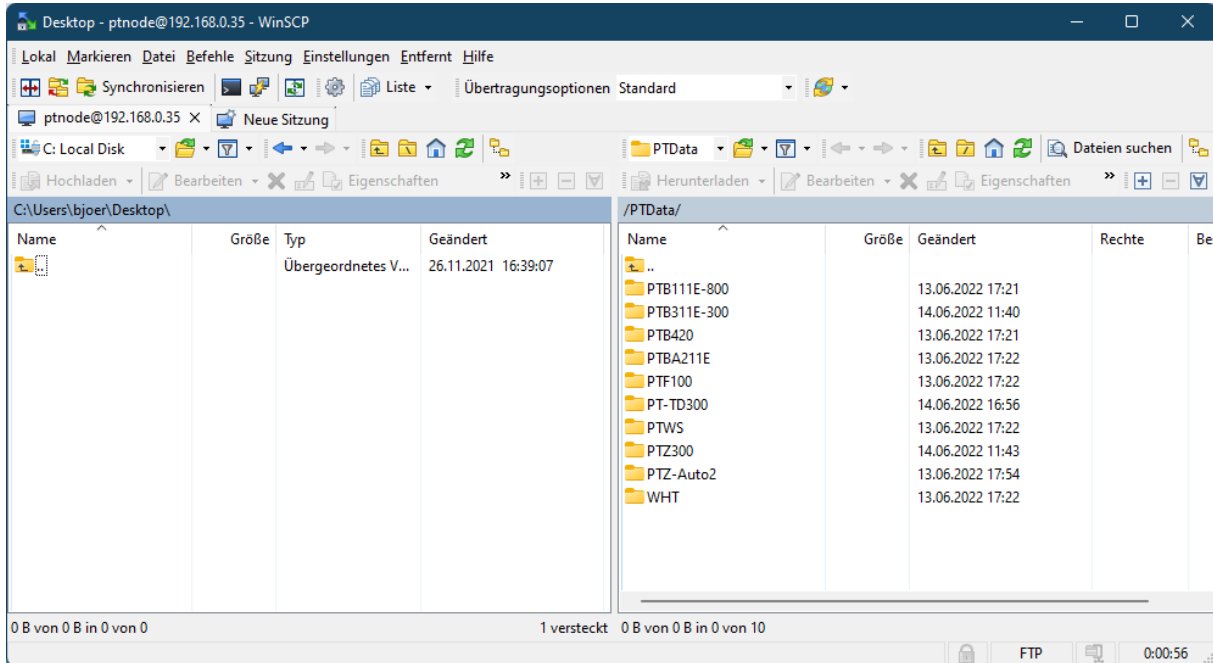
From here you can print your report on any printer available from your computer. This can be a directly connected USB printer or any network printer. Of course, you can also use a PDF writer.



## Data Transfer



PT-Node stores the data it receives from the connected instruments to its internal SD card. It makes the data available via network (Ethernet/TCP) either by a wired LAN or wireless WiFi connection. By default, connection to the network is made by DHCP but static IP addresses can also be configured. To perform the initial network configuration PT-Node creates a WiFi access point through which the web interface of PT-Node can be accessed.



The result data stored on PT-Node can be accessed through a FTP connection. The data itself is stored in .csv files.

## Supported Pharma Test Instruments

### » Hardness testing instruments:



PTB 111E



PTB 311E/511E



PTB 330



PTB 420/PTB 420 Auto



WHT 4/WHT 3ME



PTBA 211E

### » Disintegration testing instruments:



PTZ 100/PTZ 300



PTZ AUTO



PTZ AUTO EZ

### » Friability testing instruments:



PTF 100 / PTF 200



PTF 300 / PTF 600

### » Powder testing instruments:



PT-TD300

### » Dissolution testing instruments:



PTWS 120D / PTWS 120S



PTWS 820D



PTWS 620



PTWS 1220



PTWS D620



PTWS 1420

## Advantages

- » Connect up to two Pharma Test instruments at the same time
- » Use your existing printers to document your test results
- » Use both local and network printers as well as PDF writers
- » Use the same PT-Node for different Pharma Test instruments
- » Export test result via a network to external systems without a direct cable connection
- » No need to install any software locally

## Features

- » Connect your Pharma Test instrument to your company network
- » Use either wired LAN and wireless WiFi connections
- » Print result reports via web browser on any local or network printer
- » Transmit test results to external systems like LIMS via a wired FTP connection
- » Configure PT-Node via a simple web-based interface

## Standard Scope of Supply

PT-Node comes ready to use with the following standard scope of supply:

- » PT-Node device with ports to connect up to two instruments simultaneously
- » LAN cable and power adapter
- » Comprehensive documentation folder including:
  - » User manual
  - » QC/DQ testing certificate
  - » IQ documentation
  - » OQ documentation
  - » Conformity Declaration
  - » CE/EMC Declaration
  - » Instrument logbook

## Technical Specifications

Parameter	Specification
Display	OLED screen shows network status, IP address, connected instruments and date & time
Configuration	Web-interface through web browser
Data storage	Internal SD card
Interfaces	2 x RS-232 serial port to connect up to two Pharma Test instruments, 1 x LAN port or WiFi to connect to network
Printer support	Printing via web browser on any local or network printer
Data access	FTP server connection
Power	115-230 Volt AC, 50/60 Hz
CE / EMC certification	All CE / EMC Certification provided
Validation	All IQ & OQ documents included

Features are subject to change due to ongoing development. We reserve the right to make technical changes without any prior notice.